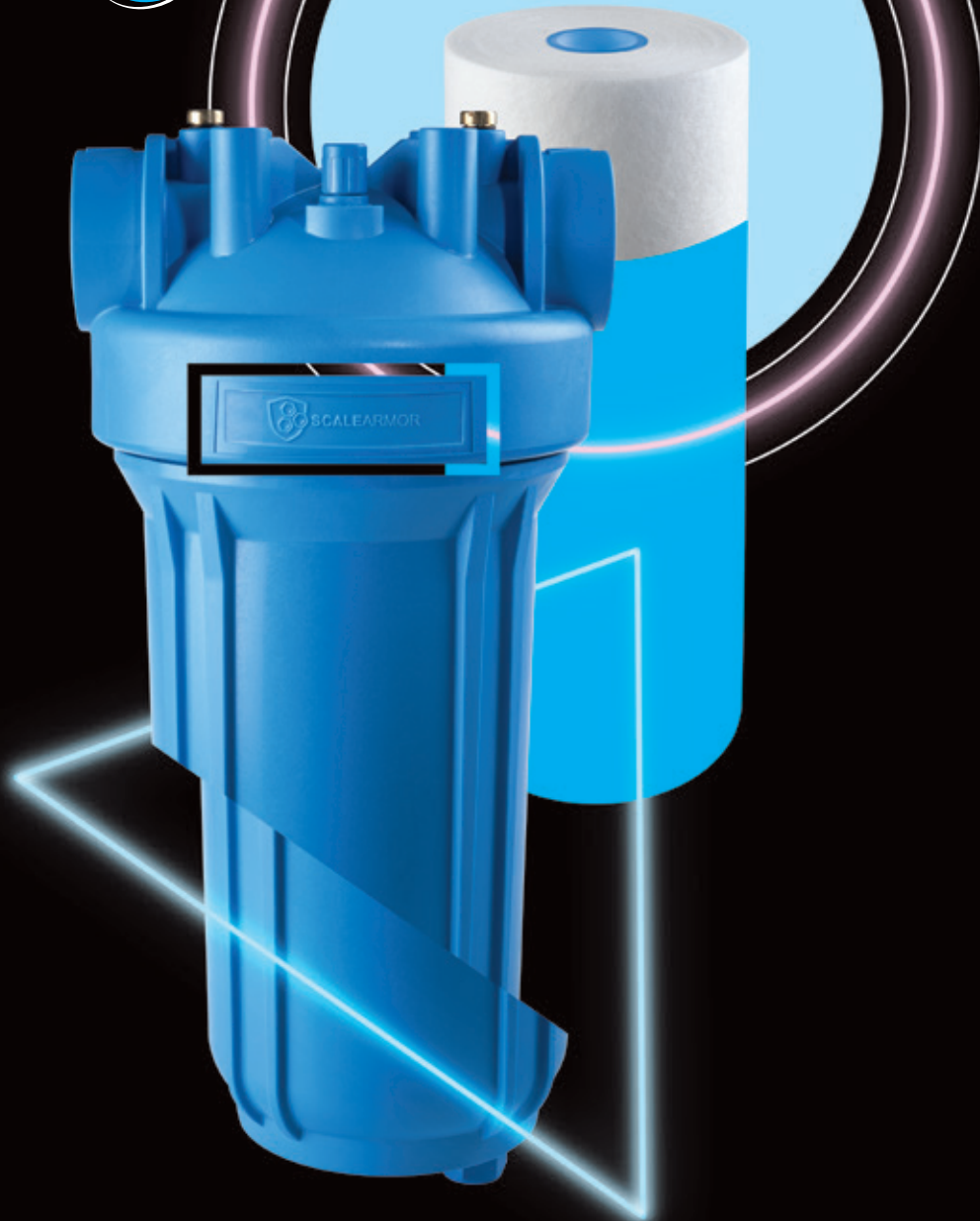


ScaleArmor™
Blues
THE ULTIMATE ANTI-SCALE



DOUBLE ACTION SYSTEM

EXCLUSIVE SCALE PREVENTION + ACCURATE SEDIMENT REMOVAL

ScaleArmor™ BLUES

BLOCKS SCALE - REMOVES SEDIMENT - REDUCES CONSUMPTIONS

ScaleArmor™ BLUES is the complete system that prevents limescale build-up on surfaces, reducing pipe scale build-up, and also eliminates sediment.

It does not soften the water, but prevents the growth of calcium and magnesium carbonate crystals that form limescale.

ScaleArmor™ BLUES is a ready-to-use kit that contains: housing, cartridge, spanner, wall bracket, o-ring, lubricant and instructions.

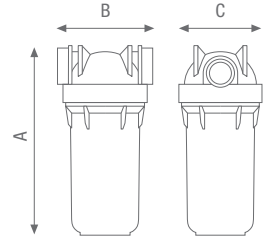
MAX WORKING PRESSURE
BigBLUES: 8,3 bar (120 psi)
BLUES: 8 bar (113 psi)

POINT OF ENTRY **COLD WATER**

MAX WORKING TEMPERATURE
 45°C (113°F)
MIN WORKING TEMPERATURE
 4°C (39,2°F)

MAX TOTAL HARDNESS
 50°F (500 ppm CaCO₃)

MAX FLOW RATE
BLUES 10: 1300 L/h (5.7 GPM)
BLUES 20: 1600 L/h (7 GPM)
BigBLUES 10: 2500 L/h (11 GPM)
BigBLUES 20: 4000 L/h (17.6 GPM)



BENEFIT

- **PROVEN SCALE PREVENTION**
- **ACCURATE SEDIMENT REMOVAL**
- **DOUBLE ACTION UP TO 6 MONTHS**
- **WORKS AT HIGHER TEMPERATURES**
 - Max 45°C - 113°F | Min 4°C - 39.2°F
- **ECOFRIENDLY:**
 - REDUCES ENERGY CONSUMPTION
 - RECYCLABLE MATERIALS

SPECIFICATIONS

Selected raw materials, suitable for drinking water.
 Head: reinforced polypropylene.
 Bowl: reinforced polypropylene (Big Blues) - PET (Blues).
 O-ring: EPDM (Blues); Silicone (BigBLUES).
 Breather-valve: body polypropylene (Big Blues)
 - stainless steel (Blues), o-ring EPDM.
 Drain plug (only Big Blues models): nylon.
 Gauge plug: CW 511 L brass.
 Filter Media: Polypropylene with ScaleArmor™ media.



BLUES BIG10

THREADS TYPE



-IN- PLASTIC BSPP*

ScaleArmor™ Systems

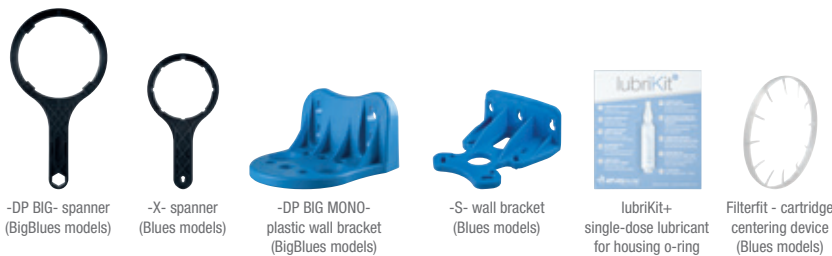


BLUES 10

BLUES 20

BLUES BIG20

ACCESSORIES INCLUDED

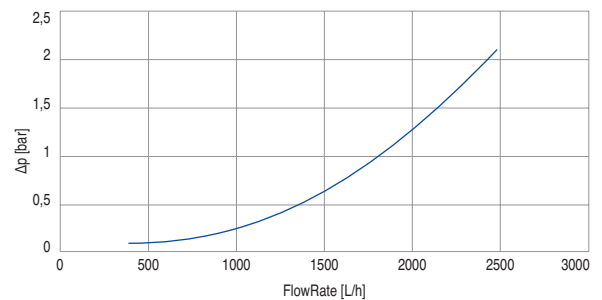


ScaleArmor™ BLUES

HOUSINGS WITH PLASTIC BSPP THREADS

PART NUMBER	MODEL	SUITABLE CARTRIDGE	IN/OUT	MAX FLOW RATE	DIMENSIONS mm		
					A	B	C
ZA1380553	BLUES10 ScaleArmor™ System 3/4 IN 5 mcr	10"	3/4"	1300 L/h	325	122	107
ZA1381553	BLUES20 ScaleArmor™ System 3/4 IN 5 mcr	20"	3/4"	1600 L/h	577	122	107
ZA1380653	BLUES10 ScaleArmor™ System 1 IN 5 mcr	10"	1"	1300 L/h	325	122	107
ZA1381653	BLUES20 ScaleArmor™ System 1 IN 5 mcr	20"	1"	1600 L/h	577	122	107
ZA1701837	BLUES BIG10 ScaleArmor™ System 1 IN 5 mcr	10"	1"	2500 L/h	390	190	185
ZA1801837	BLUES BIG20 ScaleArmor™ System 1 IN 5 mcr	20"	1"	4000 L/h	647	190	185

Tests carried on ScaleArmor™ Blues 10 System. Testing mode: 20°C, 3 BAR



REPLACEMENT CARTRIDGE AVAILABLE

PART NUMBER	MODEL
RA5765508	CPP 10 ScaleArmor™ 5 mcr
RA5767508	CPP 20 ScaleArmor™ 5 mcr
RA5765608	CPP 10 BIG ScaleArmor™ 5 mcr
RA5767608	CPP 20 BIG ScaleArmor™ 5 mcr

CERTIFICATIONS:



Housings are tested and certified under the most stringent procedures worldwide, in compliance with the sanitary certifications DM25 -Italy- EAC/Ghostregistrazia -Russia- and ACS -France-



Scale Armor™ media is certified by IAPMO R&T against IAPMO Z601 for material safety requirement.